

Item 1

[www.sanmateoRCD.org](http://www.sanmateoRCD.org)

[www.facebook.com/sanmateoRCD](https://www.facebook.com/sanmateoRCD)

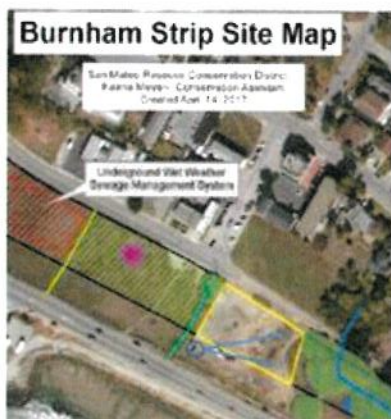
**From:** Barbara Dye <[blkdye@gmail.com](mailto:blkdye@gmail.com)>  
**Sent:** Monday, August 12, 2019 10:49 AM  
**To:** Cleopatra Tудay <[Cleopatra@sanmateorcd.org](mailto:Cleopatra@sanmateorcd.org)>  
**Subject:** question for you

Hi Cleo,

It was nice to chat with you and thank you for your update.

At our Thursday meeting we are going to be talking about moving the skateboard ramp onto GCSD property. There are influential people who want it moved south, on the edge of the parking lot closest to the natural vegetation. Can you tell us what an appropriate setback would be? The area has cars parked on it now, so it's packed dirt and not particularly sensitive, but we also want to be aware of the habitat next to it. It would be great to have something by Thursday for our meeting.

The blue circle with the two arrows show possible new locations.



Thanks!

Barbara

## FOR ITEM 4

To the Honorable GCSD Board of Directors,

My primary goal of getting involved with the PAC almost 4 years ago was to build a bike park facility. I have two sons and many friends with children who all rave about visits to other bike park facilities in Santa Cruz, Truckee AND South Lake Tahoe.

There is a local group led by PJ Monica who had been trying to build a Pump track on private property next to the preschool on the Burnham Strip. That property now belongs to the District. Then SMC parks started the development of their master plan at Quarry Park. After at least four public planning sessions and online survey, the Pump track topped the list for recreational improvements. Since then, the county has had some delays in finalizing the master plan. I've also been made aware that they don't have the pump track as an immediate priority.

PAC has approved establishing a "pump track taskforce". This will create communication between the District and the County for the purpose of moving a pump track project forward. Sam Herzberg has suggested a meeting with the GCSD in order to do so. It is important to start talks with the County so that the pump track may be included in their Master Plan once it is formalized. I recently spoke with Sam and he said that we need a meeting to address the following questions:

- What are GCSDs priorities in Quarry Park? How does the pump track fit in the list?
- What will be the pump track design process? How will the public play a role?
- What are the construction details?
- What is an anticipated budget and how will we fund it?
- How will it be maintained in the future?

Sam says the County has no money for the pump track. We need to establish an agreement with them before a pump track can be incorporated into the Master Plan. Since the SMC Parks is very established and much bigger than us, they do things from the top down. Everything is heresy until a formal agreement is made. Just saying that volunteers will show up with dirt and shovels and "make it happen" doesn't work for them. We are new, grassroots and pushing things from the bottom up. I've always hoped we could just rally the troops and build a track when they gave us the go ahead. Unfortunately, that isn't going to fly at Quarry Park.

I encourage you to vote to create this task force and thereby encouraging us to strengthen the relationship with county parks. We can greatly assist in this by communicating between both sides and working on the details that county needs. We are the parents of young bike riders, riders ourselves and highly motivated to get this track going!

Thank you for your consideration  
Paul Koelsch  
PAC member