

GRANADA RECREATION CENTER PROGRAMMING + CONCEPTUAL DESIGN

Board Presentation | February 23rd 2023



GROUP 4



Granada Community Services District

AGENDA

1. Community Engagement
2. Conceptual Design Presentation



COMMUNITY SURVEY

December 3rd – December 17th

~395 PARTICIPANTS*

~40 Pop-Up Kiosk

~355 Online Survey

***GCSD residents**

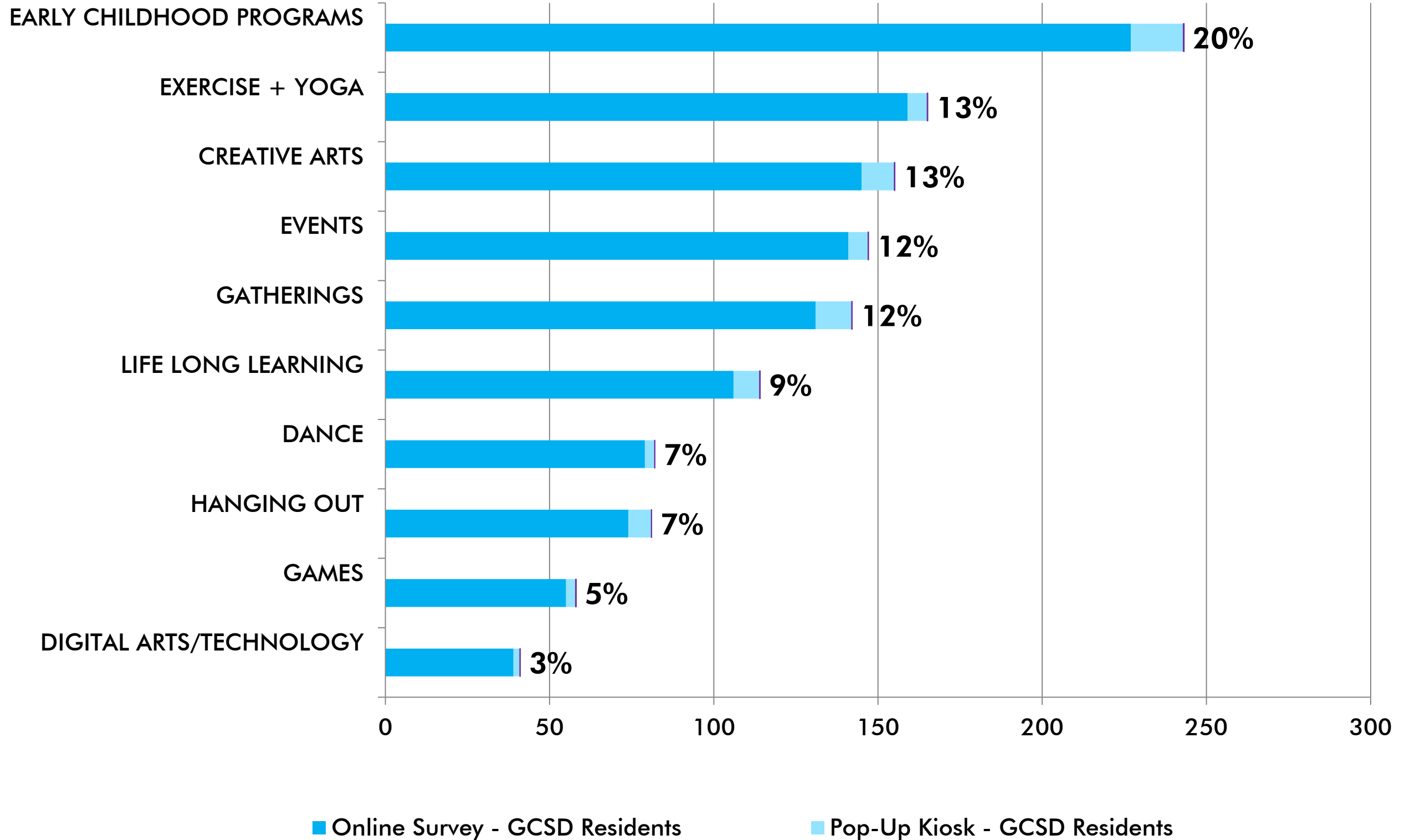
(El Granada, Miramar, Princeton by the Sea/Clipper Ridge, Princeton)



COMMUNITY ACTIVITIES



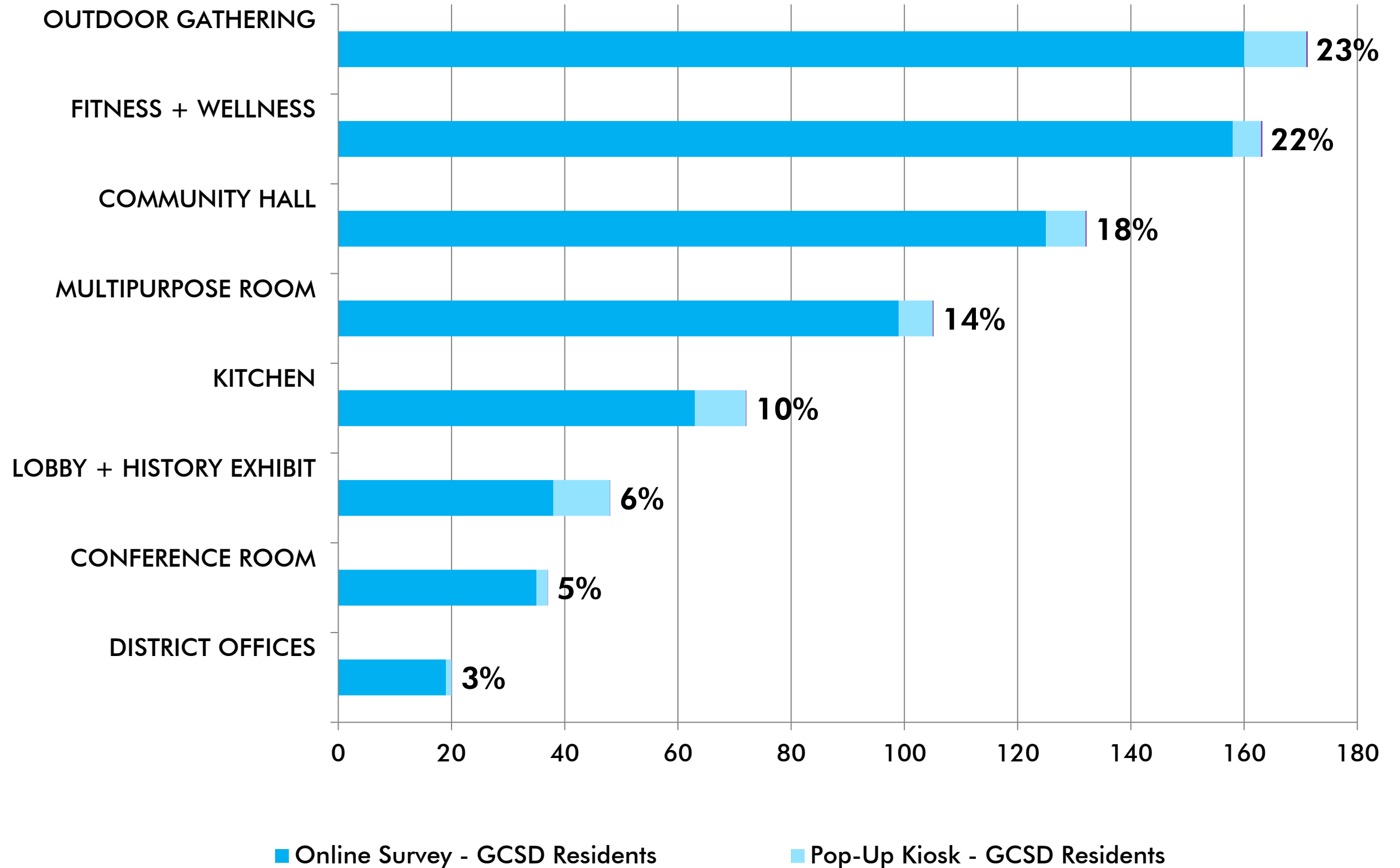
EARLY CHILDHOOD PROGRAMS is a high priority for the community



COMMUNITY SPACES



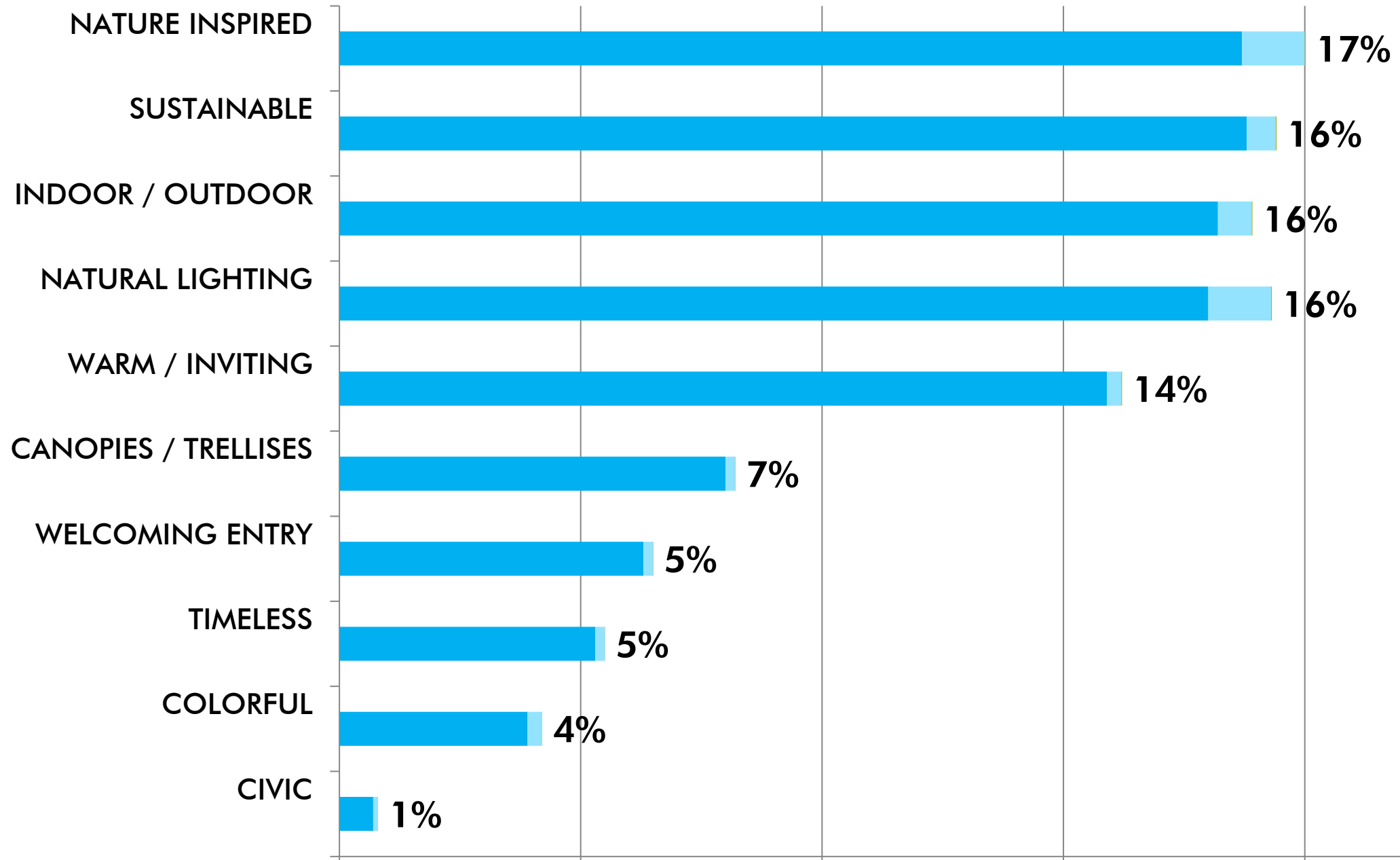
OUTDOOR GATHERING is a high priority for the community



BUILDING DESIGN VALUES



NATURE INSPIRED is a high priority for the community



■ Online Survey - GCSD Residents

■ Pop-Up Kiosk - GCSD Residents

SUSTAINABLE STRATEGIES



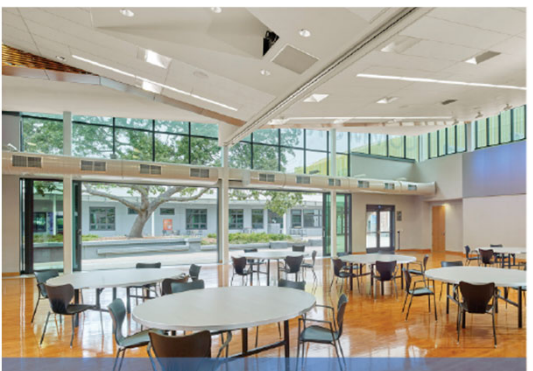
NATIVE + DROUGHT TOLERANT LANDSCAPE is a high priority for the community



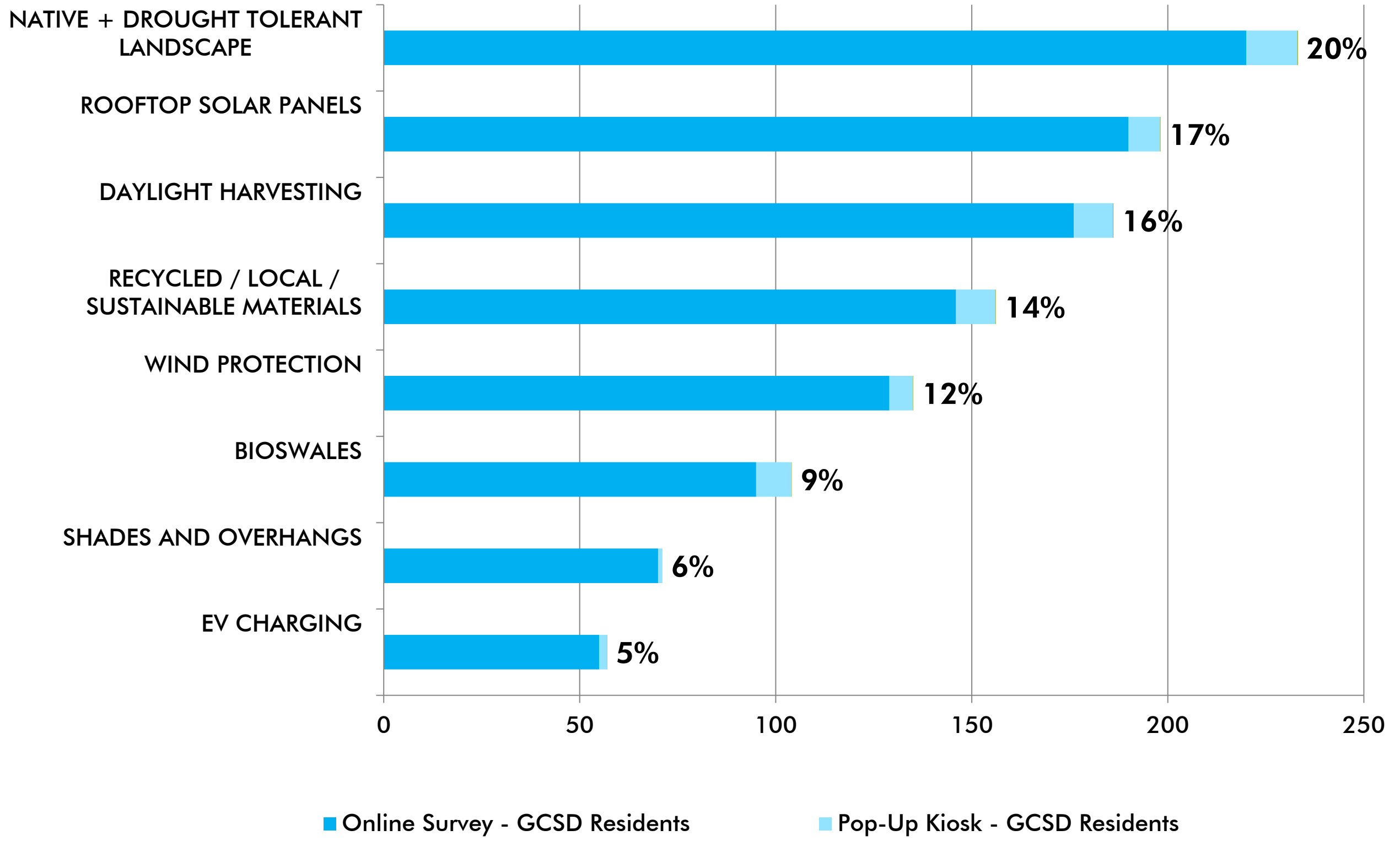
NATIVE + DROUGHT TOLERANT LANDSCAPE



ROOFTOP SOLAR PANELS



DAYLIGHT HARVESTING



PROGRAM SUMMARY

DRAFT
TOTAL AREA ~6,000 SF



COMMUNITY ROOM WITH STORAGE
~2,000 SF



FITNESS ROOM WITH STORAGE
~850 SF



LOBBY/RECEPTION
~300 SF



ACTIVITY ROOM WITH STORAGE
~850 SF



SMALL MEETING ROOM
~180 SF



CATERING PANTRY WITH STORAGE
~300 SF



COMMUNITY ROOM WITH STORAGE (~2,000 SF)



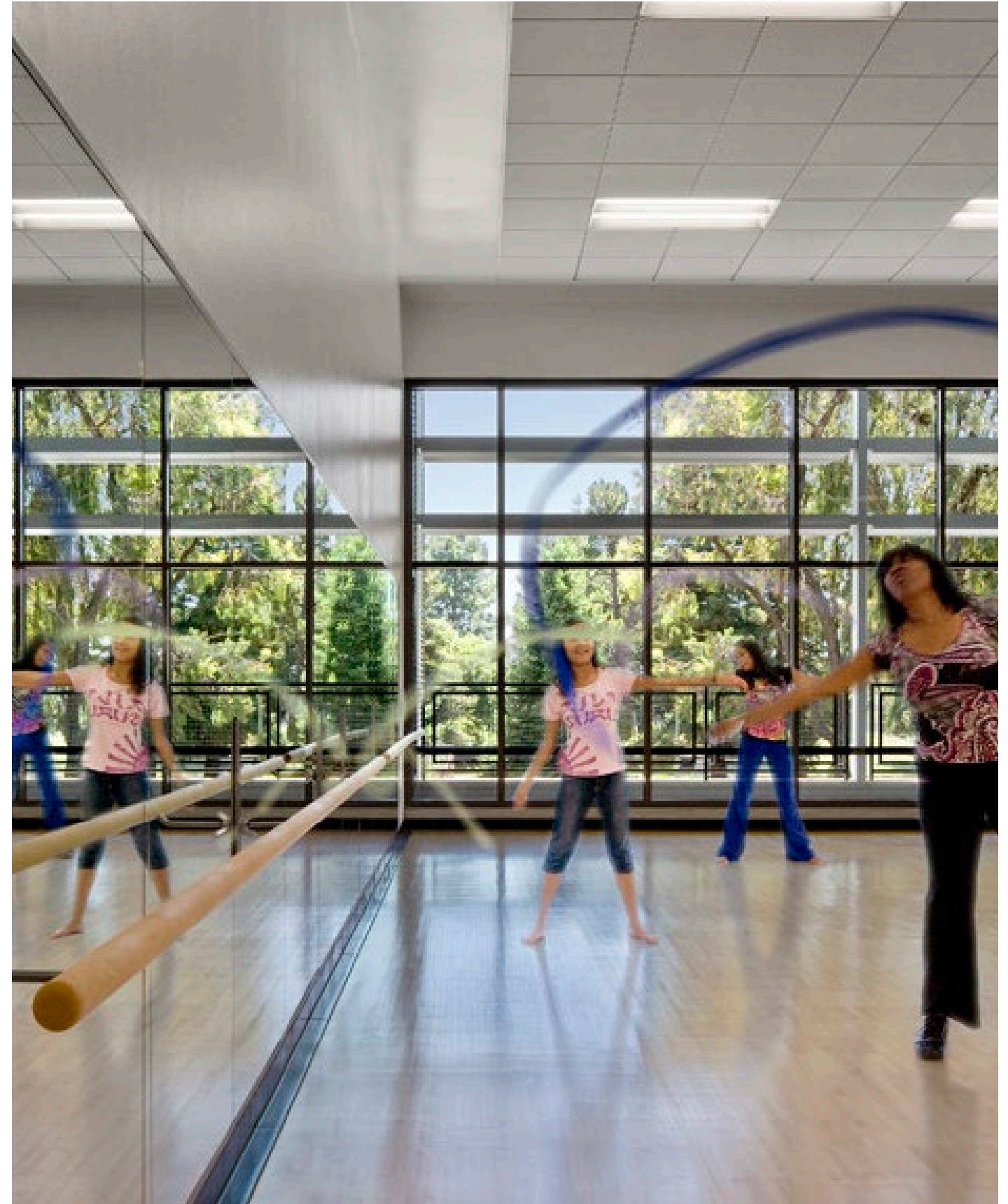
SMALL MEETING ROOM (~180 SF)



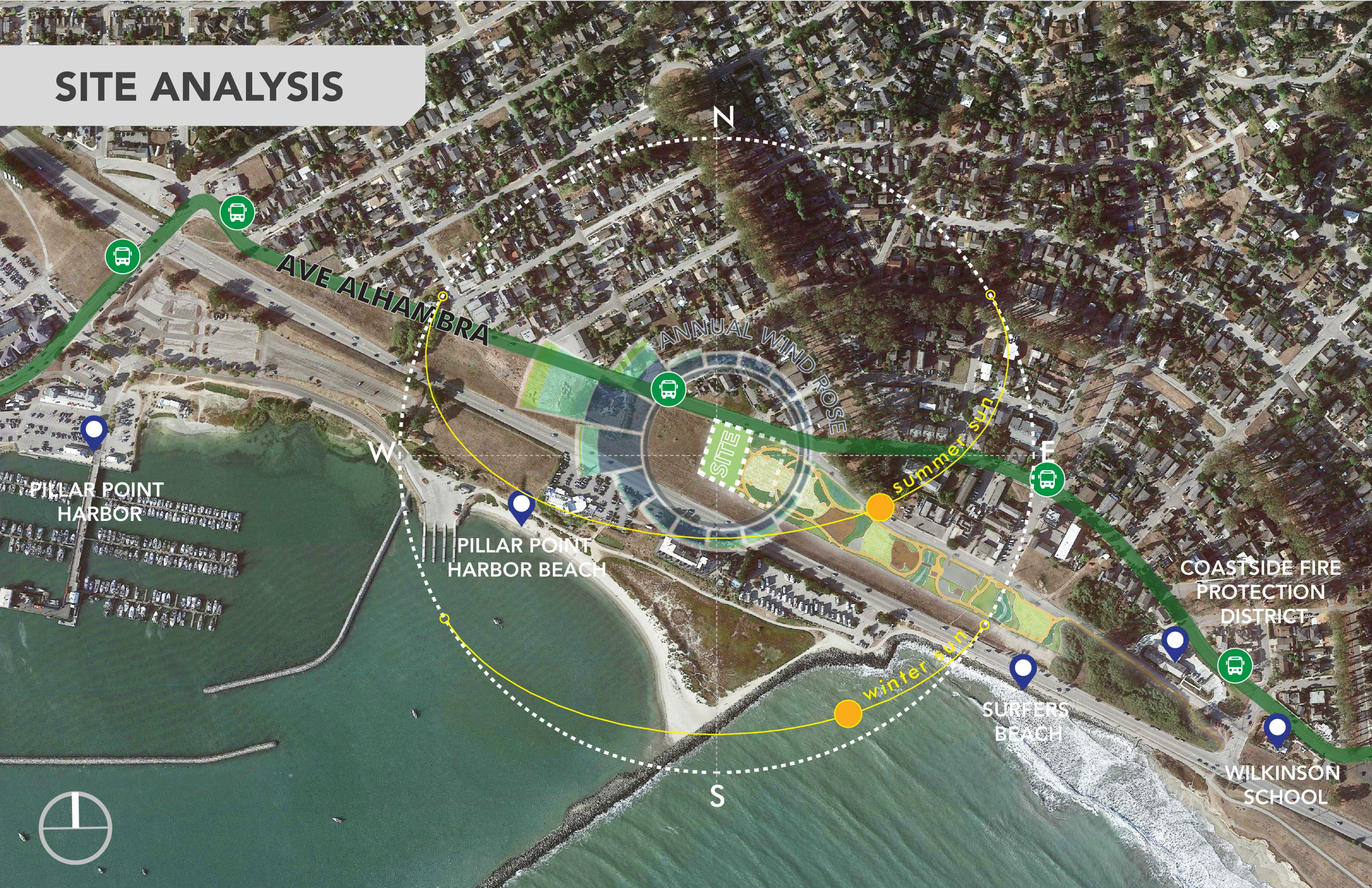
ACTIVITY ROOM WITH STORAGE (~850 SF)



FITNESS ROOM WITH STORAGE (~850 SF)



SITE ANALYSIS



CURRENT BURNHAM PARK PLAN

MASTER PLAN BURNHAM PARK

OSISPO ROAD AT PORTOLA AVENUE, EL GANADA



MAY 15, 2022



SCALE: 1/32" = 1'-0"



RECREATION CENTER

SITE AERIAL

DRAFT 



RECREATION CENTER

AVENUE ALHAMBRA

BURNHAM PARK

CABRILLO HIGHWAY

SITE PLAN

DRAFT



Entry

Activity Room
Courtyard

Fitness Courtyard

Outdoor Community
Living Room

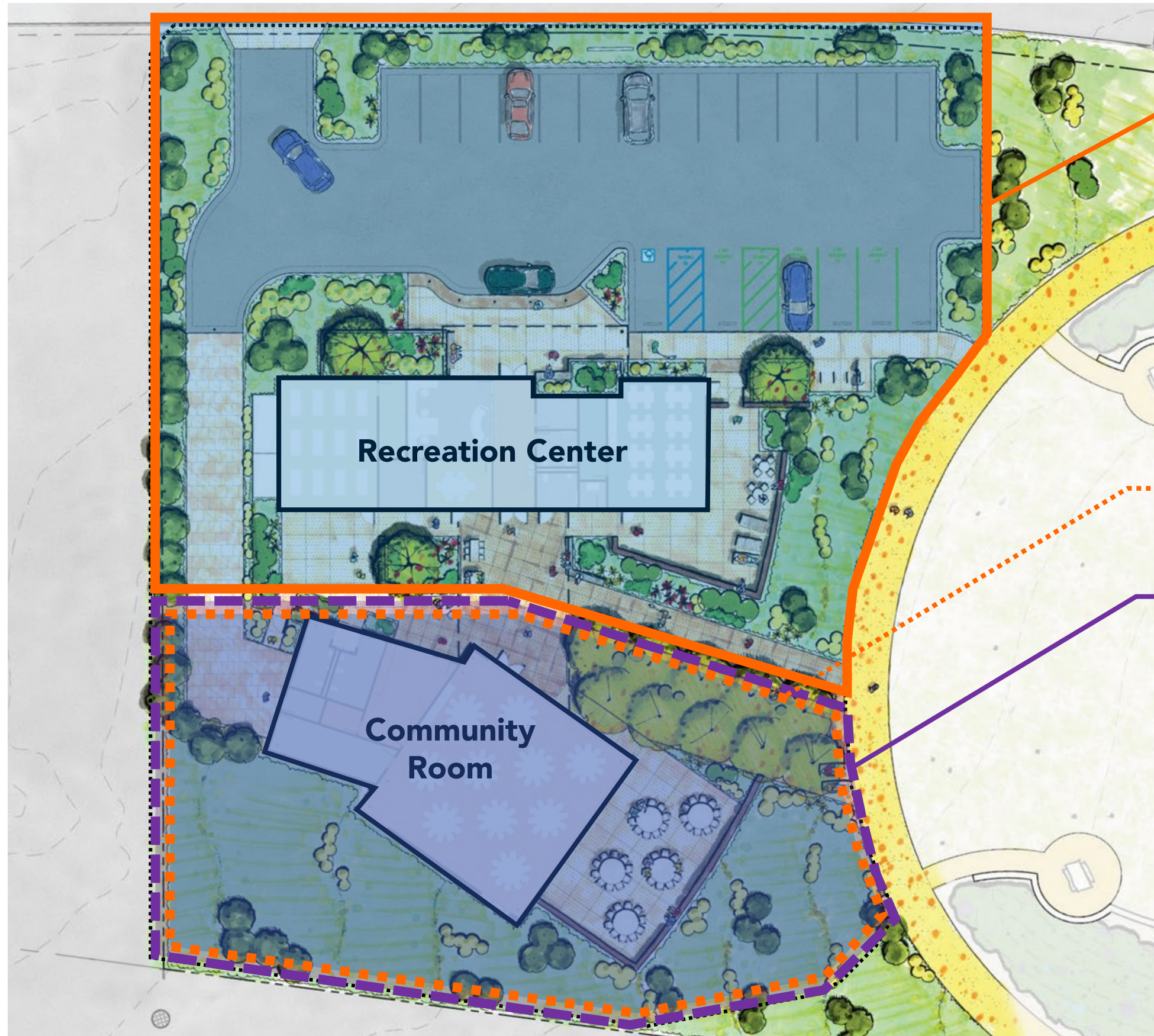
Path connect to
Burnham Park path

Community Room
Courtyard

Native, climate-
appropriate, and
drought-tolerant
landscaping throughout

PHASING DIAGRAM

DRAFT



PHASE 1

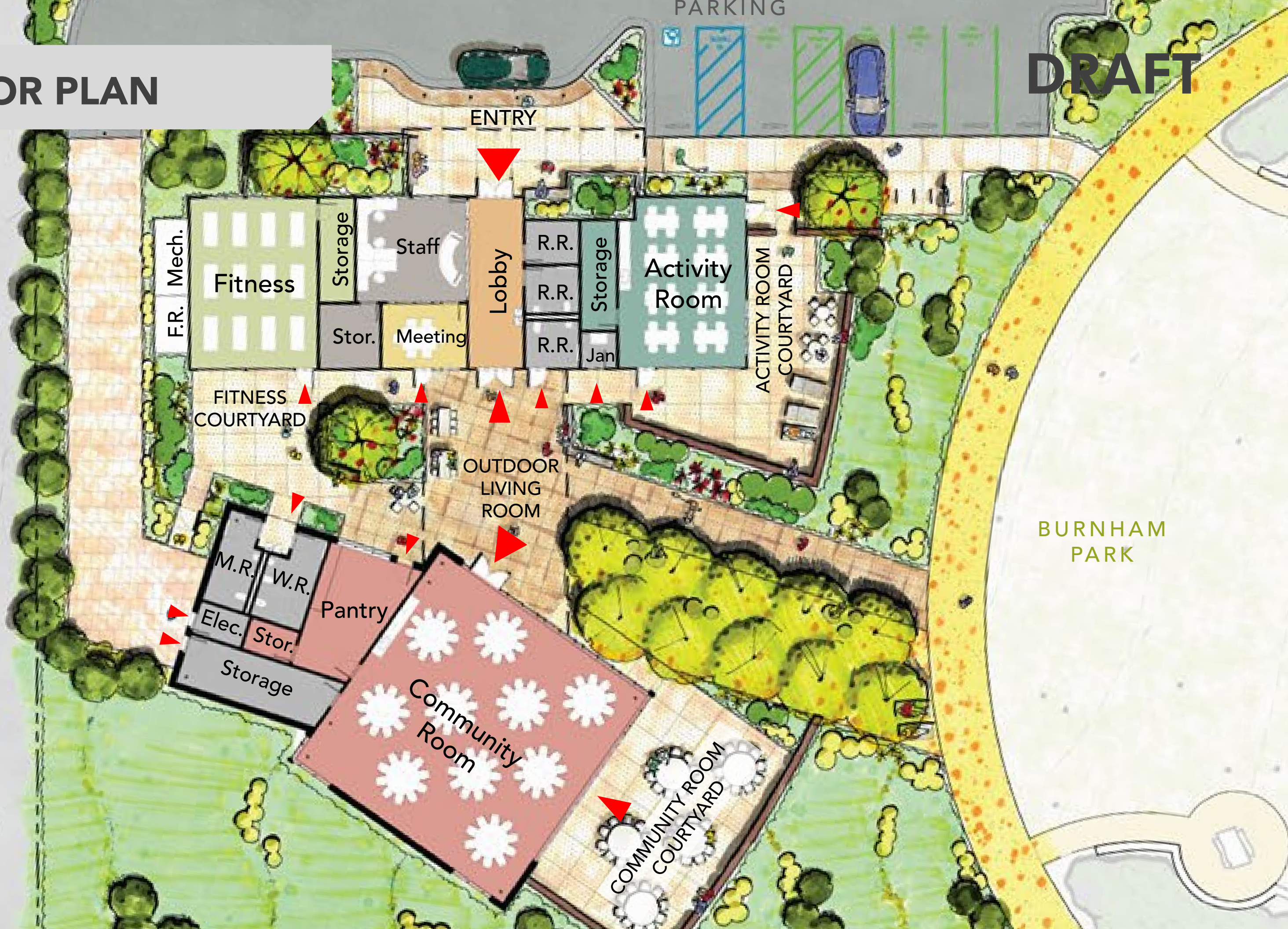
- Full site improvements of Phase 1 area
- Renovation of existing building
- Grading for new building
- Site Preparation for Phase 2

PHASE 2

- Site improvements of Phase 2 area
- Construction of new building
- Connecting trellises/overhangs in central courtyard

FLOOR PLAN

DRAFT



CONCEPTUAL DESIGN

DRAFT



entry view

CONCEPTUAL DESIGN

DRAFT



view from Burnham Park

CONCEPTUAL DESIGN

DRAFT



view from Cabrillo Highway

2/16/2023

District Board Presentation

GRANADA RECREATION CENTER